

Accessories for Shaker KS 130:

1

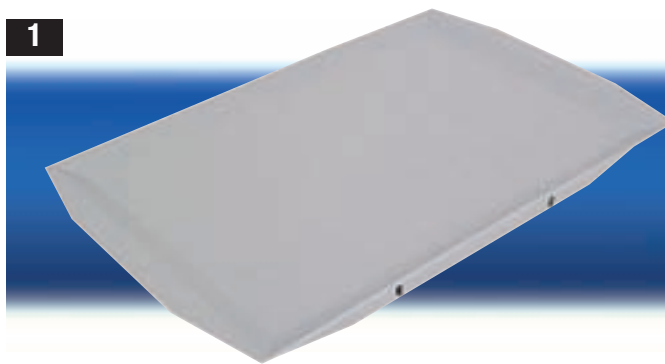
AS 130.3 Dish Attachment

For smooth shaking operations in the low viscosity range, e. g. Petri dishes or culture bottles. With integrated slip-resistant foil (PP).

Dimensions (W x D x H):	420 x 270 x 32 mm
Set-up surface	220 x 340 mm
Weight:	0.370 kg

Description	PU	Order No.
AS 130.3 dish attachment	1	0223120000

1



Accessories for Shaker KS 130:

2

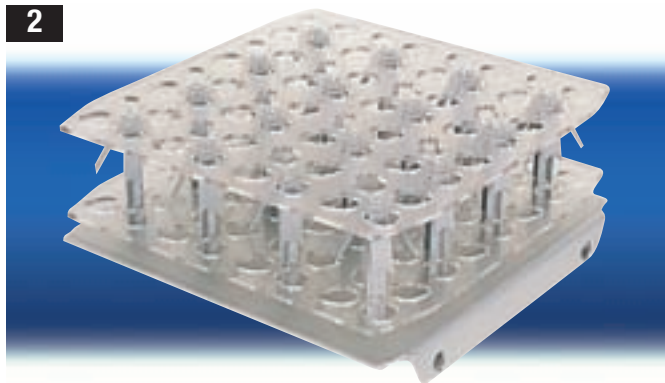
AS 130.4 Test Tube Attachment

For intensive shaking, e. g. small tubes, test tubes, cuvettes, centrifuge tubes.

Dimensions (W x D x H):	220 x 230 x 95 mm
Capacity:	64 vessels
Vessel-ø:	10 to 16 mm
Minimum height of the vessels:	80 mm
Weight:	0.670 kg

Description	PU	Order No.
AS 130.4 test tube attachment	1	0223120300

2



IKA®

Orbital Shaker KS 260 basic

3

Compact, flat orbital shaker with ideal swivel motion.

- Electronic adjustment of speed and timer.
- LED display for speed and time adjustment.
- **Attachments are not included in delivery.**
- Wide range of attachment combinations makes it possible to use almost all shapes and sizes of vessels.

Accessories:

- Attachments AS 260.1, AS 260.2, AS 260.3, AS 260.5

Shaking motion	orbital
Orbital ø:	10 mm
Max. shaking weight (incl. attachment):	7.5 kg
Motor rating input / output:	45 / 10 W
Speed range:	20 to 500 min ⁻¹
Speed display	LED line
Timer:	∞ / 5 to 50 min
Max. ON-time:	100 %
Dimensions (W x D x H):	360 x 420 x 98 mm
Weight:	8.5 kg
Permitted ambient temperature:	5 to 50 °C
Permitted relative humidity:	80 %
Mains supply:	230 V, 50 / 60 Hz
	115 V - on request

Protection class acc. to DIN EN 60529: IP 21

3



Description	PU	Order No.
KS 260 basic	1	0222980200